

hadrian

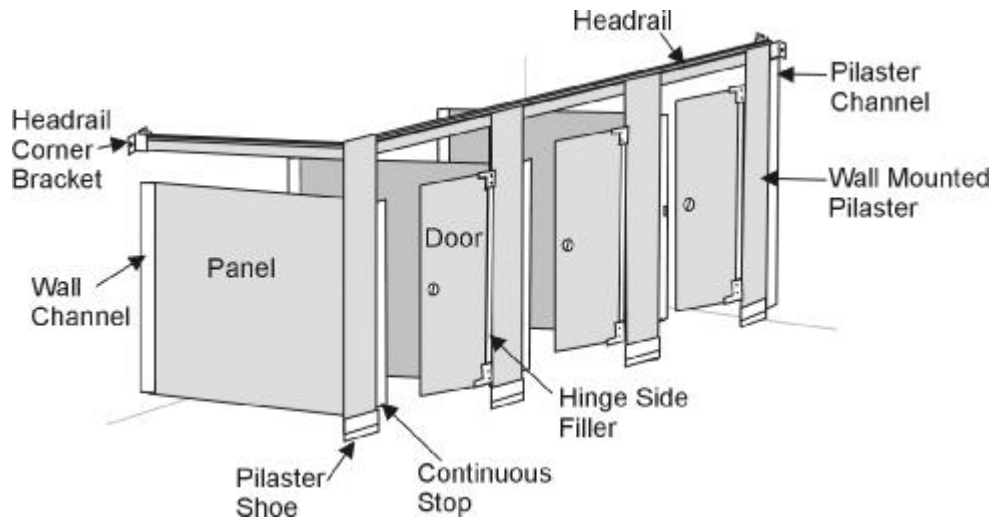
HEADRAIL BRACED INSTRUCTIONS - ELITE SERIES

INTRODUCTION

This document gives instructions for the most common unit arrangement; that is units being installed on a wall at one end, and with a free standing end panel at the other end.

Other arrangements will require different quantities of components (pilasters, panels, channels and brackets), however, the method of installation for each component type is the same.

For all dimensional information, refer to the *plan layout* and *dimensional details*.



BRACKET AND CHANNEL TYPES



607-210
Headrail Corner
Clip



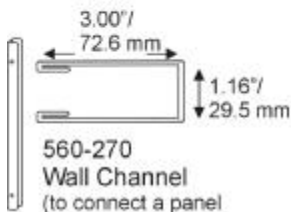
607-110
Headrail Bracket



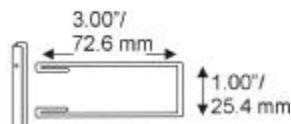
560-157
Alcove Channel
(to connect a panel
to a pilaster in-line,
e.g. In an alcove)



604-210
Floor Bracket



560-270
Wall Channel
(to connect a panel
to a wall or pilaster)



560-370/2
Pilaster Channel
(to connect a pilaster
to a wall)

TOOLS

- Power drill with 0.25" (6.4 mm) carboly drill bit
- Robertson screwdriver
- Slot screwdriver
- Measuring tape
- Level
- 6" (152 mm) high block of wood (to support panels during installation)

FASTENERS

- #25 rawl plugs
- #12 x 1.5" (38 mm) pan socket head sheet metal screws
- #12 x 0.625" (15.7 mm) Robertson head sheet metal screws
- #12 x 0.625" (15.7 mm) slotted head sheet metal screws