

## Embossed Stainless Steel - Headrail Braced ELITE MAX SERIES Metal Toilet Partitions

### Material Specification

#### **1 . 0 1      Construction**

Doors, Panels and Pilasters shall be constructed of two sheets of type 304, Embossed stainless steel with 5WL® pattern, laminated under pressure to a "verticel" honeycomb core for impact resistance, rigidity and sound deadening. Honeycomb to be of virgin, long fiber paper with a maximum 13mm (0.5") cell size. Formed edges to be welded together and interlocked, under tension, with a roll-formed oval crown stainless steel locking bar, mitred, welded and ground smooth at the corners.

#### **1 . 0 2      Doors**

Shall be between 1854mm (73") - 2336mm (92") high and 25mm (1") thick with cover sheets not less than 0.8mm (.030").

#### **1 . 0 3      Panels**

Shall be 1854mm (73") - 2336mm (92") high, with a maximum panel width of 1461mm (57-1/2") and 25mm (1") thick with cover sheets not less than 0.8mm (.030").

#### **1 . 0 4      Pilasters**

Shall be 32mm (1.25") thick with cover sheets not less than 0.9mm (.036").

#### **1 . 0 5      Headrail**

Shall be 25mm (1") by 41mm (1-5/8") extruded anodized aluminum with anti-grip design. Wall thickness to be 1.5mm (1/16") and shall be securely attached to wall and pilasters with manufacturer's fittings in such a way as to make a strong and rigid installation. All joints in headrails shall be made at a pilaster.

#### **1 . 0 6      Floor Fastening Method**

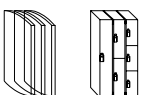
Pilasters shall be securely and rigidly fastened to the floor and fitted with a jack levelling screw for vertical adjustment. The floor fastening shall be concealed and protected by a 102mm (4") high, die-formed stainless steel pilaster or #4 brushed stainless steel pedestal, mounted panel-to-floor with a panel.

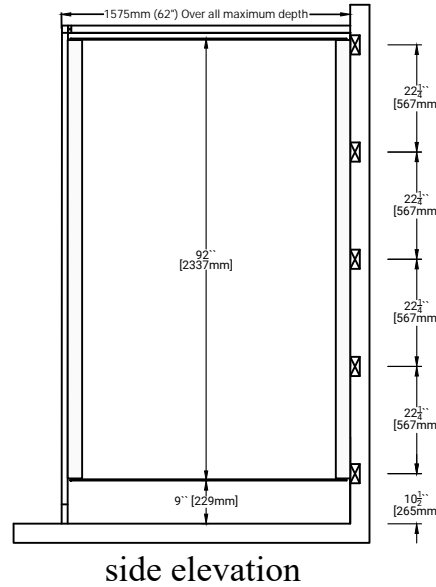
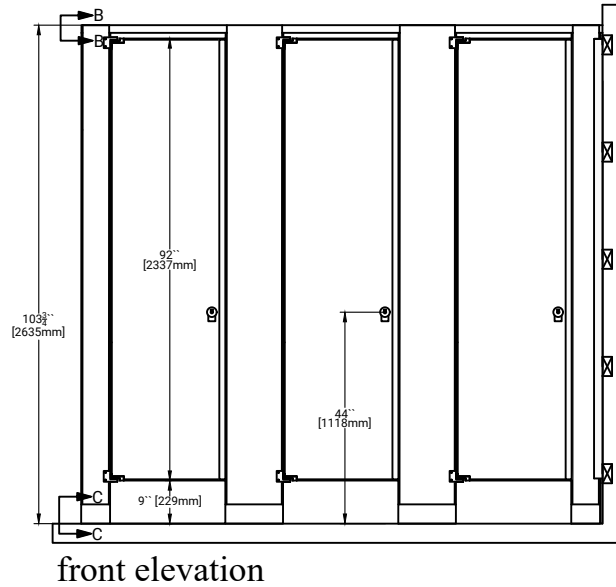
#### **1 . 0 7      Hardware & Fittings**

Panel-to-pilaster, panel-to-wall, and pilaster-to-wall connections are made with full-height channels, finished to match partitions. A full length aluminum continuous stop and full length aluminum hingeside filler eliminate all sightline gaps between pilasters and doors. Fasteners are #4 brush finished stainless steel 12 x 1-3/4" and 12 x 5/8" TR-27 6-lobe security screws. Each door to be provided with an occupancy Indicator latch #4 brushed stainless steel. Doors shall be equipped with gravity type hinges mounted on upper and lower pilaster hinge brackets. Threaded top hinge pin shall be metal with a self-lubricating nylon sleeve. Door hinges shall be wrap-around style and adjustable to permit the door to come to rest at any position when not latched. Each door to be fitted with a combined #4 brushed finished coat hook and bumper.

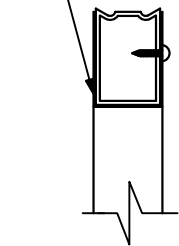
#### **1 . 0 8      Finish**

All sheet metal to be thoroughly cleaned, phosphated and finished with a high performance powder coating, baked on to provide a uniform smooth protective finish. Color shall be as selected from Hadrian's color card.

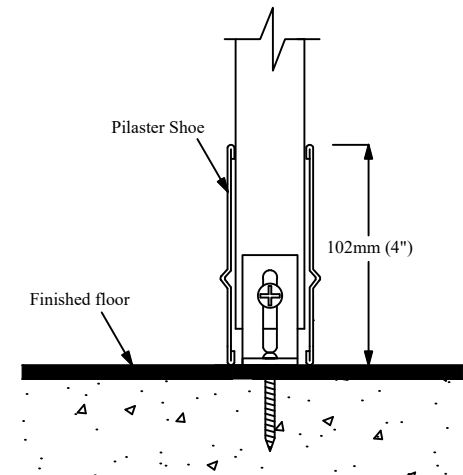




25mm (1") x 41mm (1.625")  
extruded anodized aluminum  
anti-grip headrail. Headrail sits  
3mm (.125") above pilaster.

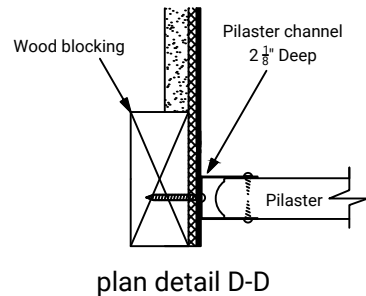
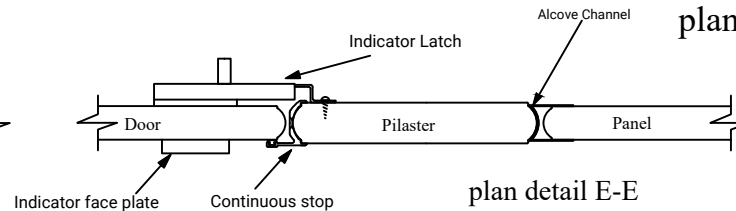
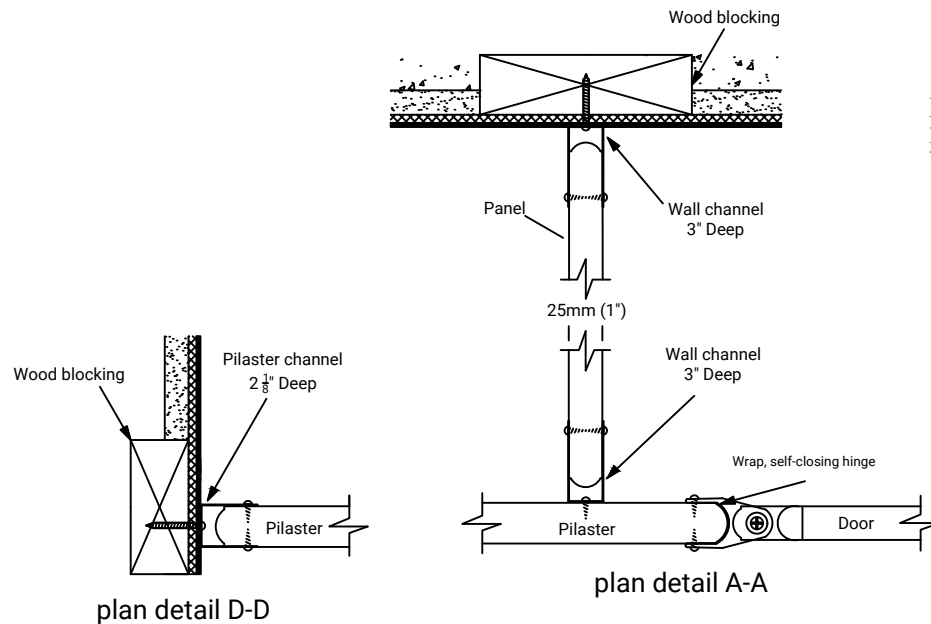


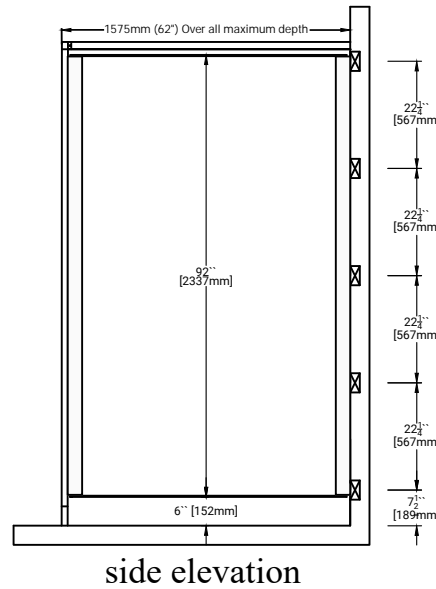
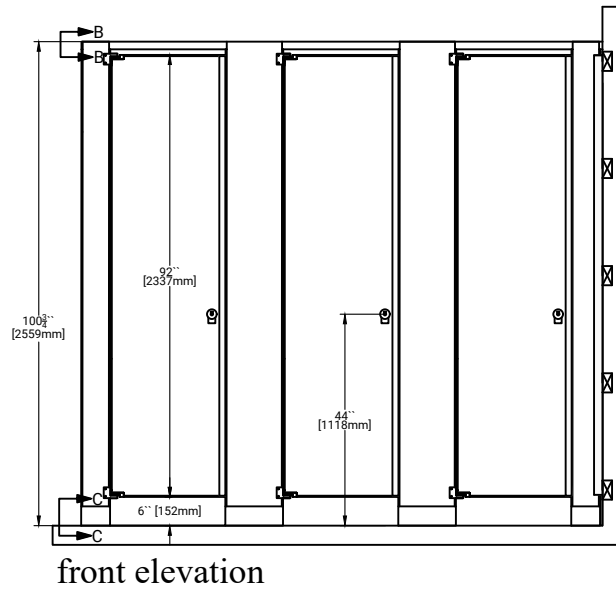
plan detail B-B



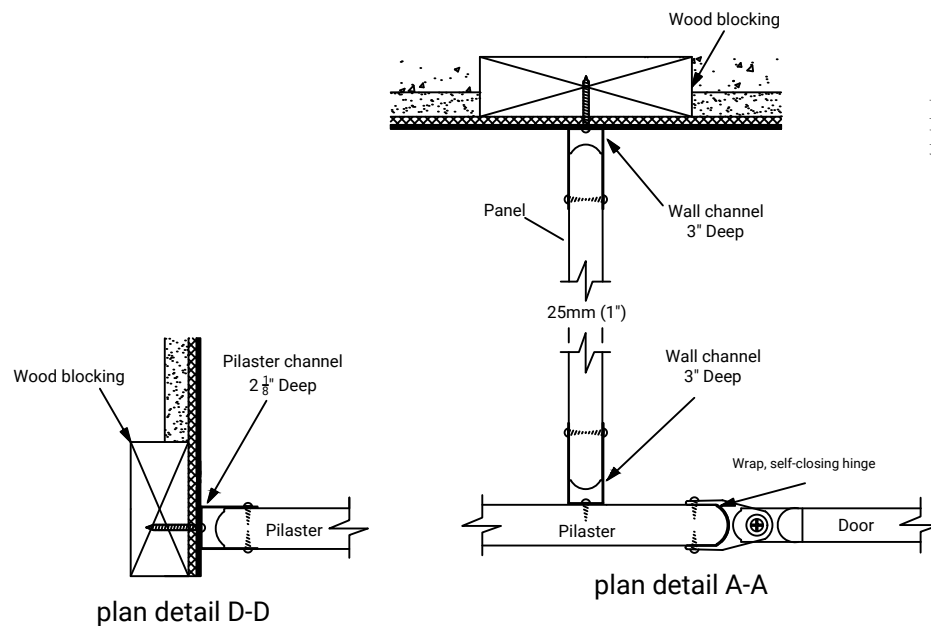
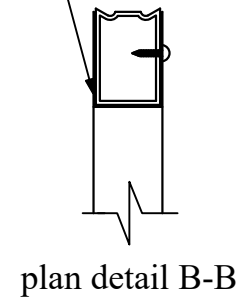
plan detail C-C

**Important Notes:**  
Refer to final drawings for wood blocking information.  
Wood blocking is critical to ensure a rigid installation.

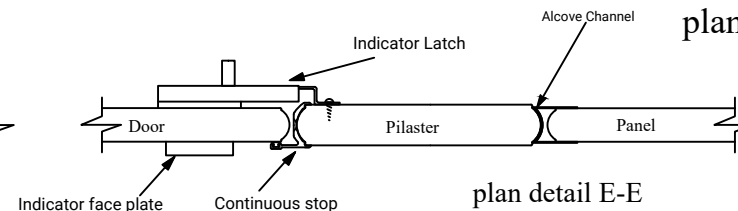
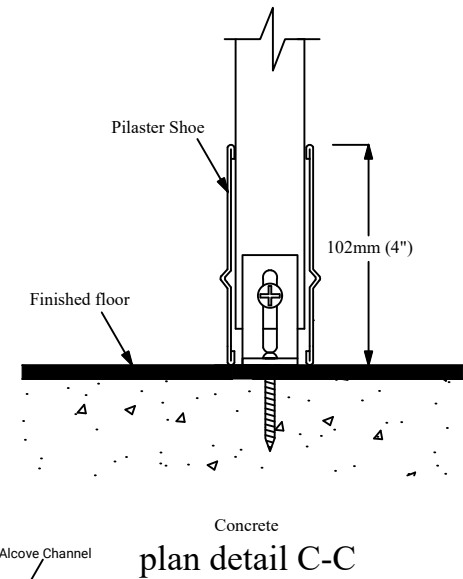




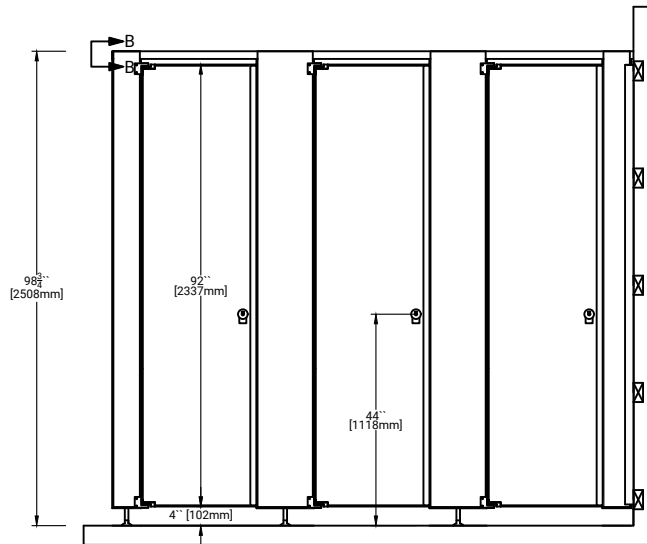
25mm (1") x 41mm (1.625") extruded anodized aluminum anti-grip headrail. Headrail sits 3mm (.125") above pilaster.



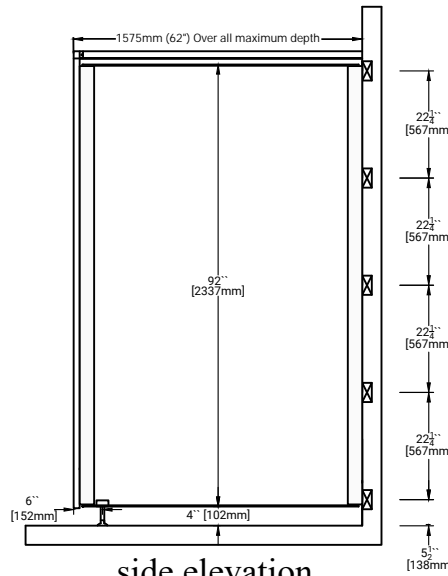
**Important Notes:**  
Refer to final drawings for wood blocking information.  
Wood blocking is critical to ensure a rigid installation.



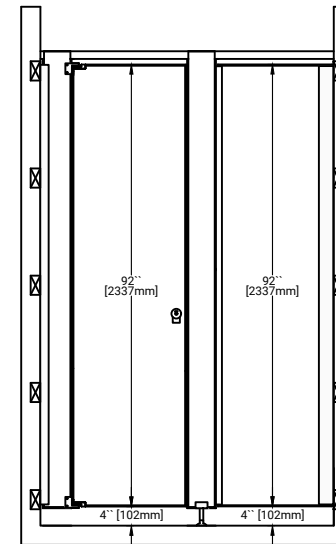
## ELITE MAX - Metal Toilet Partitions - Headrail Braced with Pedestal - 4" AFF



front elevation

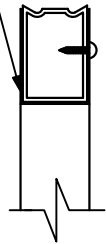


side elevation

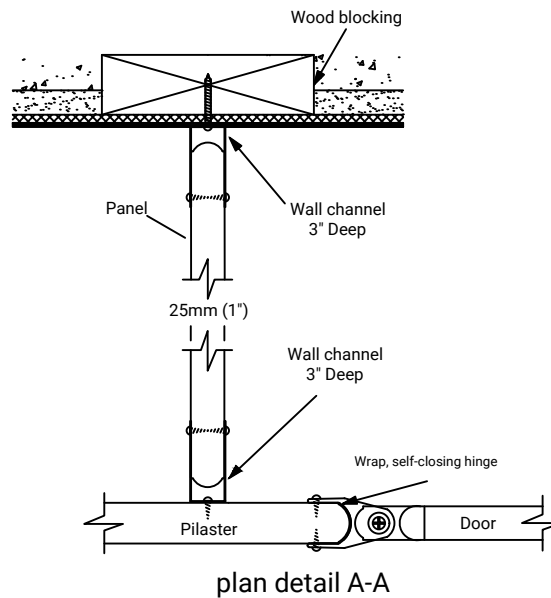


alcove elevation

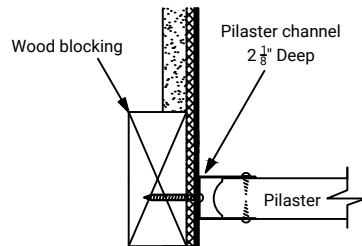
25mm (1") x 41mm (1.625")  
extruded anodized aluminum  
anti-grip headrail. Headrail sits  
3mm (.125") above pilaster.



plan detail B-B



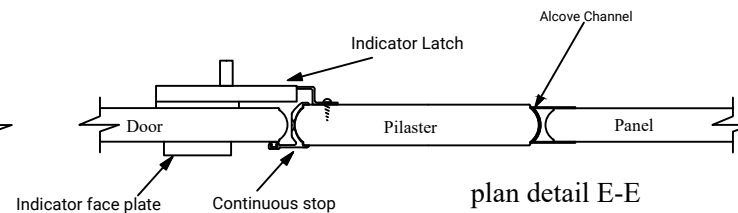
plan detail A-A



plan detail D-D

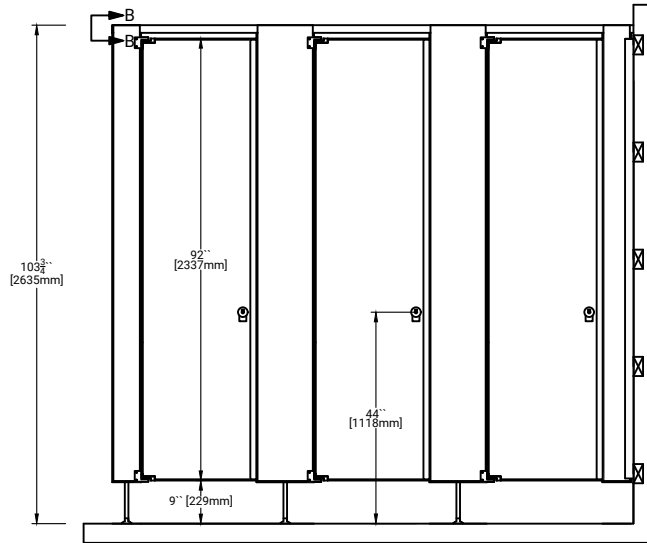
### Important Notes:

Refer to final drawings for wood blocking information.  
Wood blocking is critical to ensure a rigid installation.

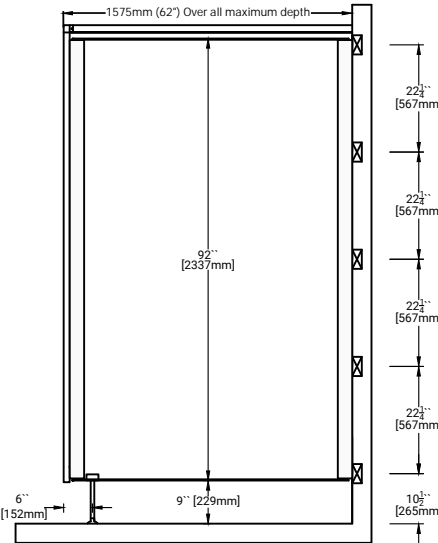


plan detail E-E

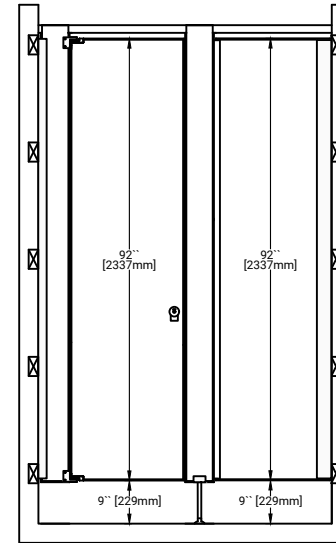
# ELITE MAX - Metal Toilet Partitions - Headrail Braced with Pedestal - 9" AFF



front elevation

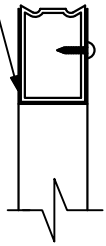


side elevation

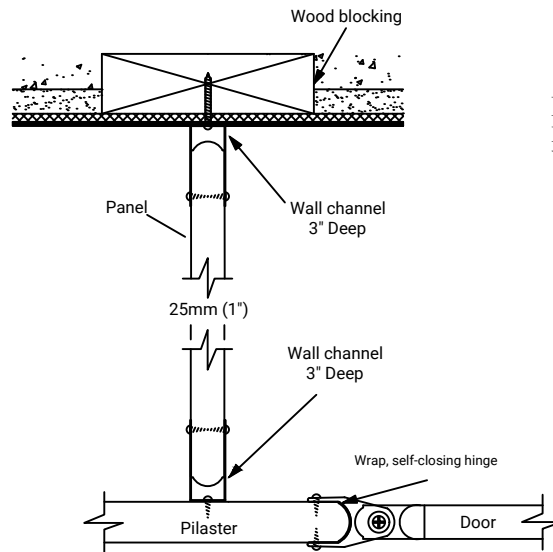


alcove elevation

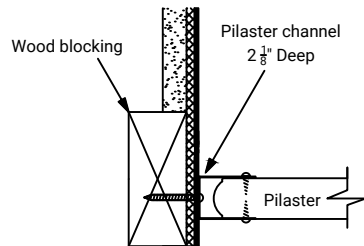
25mm (1") x 41mm (1.625")  
extruded anodized aluminum  
anti-grip headrail. Headrail sits  
3mm (.125") above pilaster.



plan detail B-B



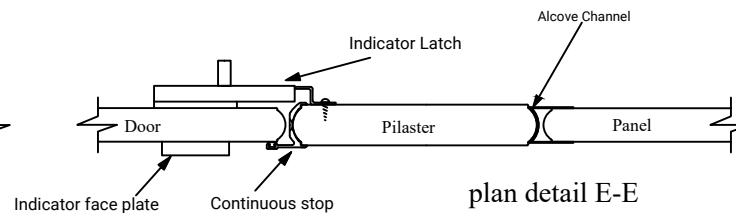
plan detail A-A



plan detail D-D

## Important Notes:

Refer to final drawings for wood blocking information.  
Wood blocking is critical to ensure a rigid installation.



plan detail E-E