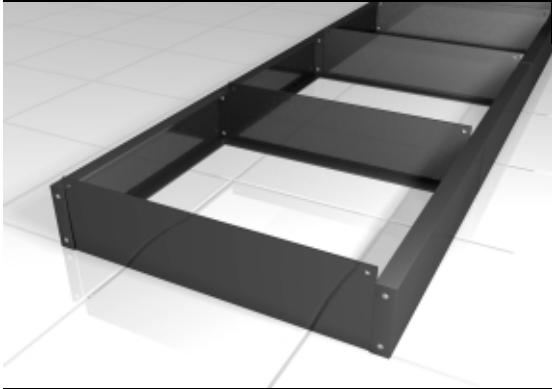


LOCKERS



Box Base *locker accessories*

Adding extra strength and height to lockers, the versatility of Box Bases make them ideal for any size installation. Bases are recessed 1.75" (44mm) from the locker front to allow for toe space and protection against damage from cleaning. To help withstand damp floor conditions, the base is made from galvalneal steel (at no extra charge).

hadrian
toilet partitions and lockers

www.hadrian-inc.com

Specifications: Section 10500

Part 1 - General

1.01 **Qualifications**

Qualifications of alternative products will be evaluated only if they are submitted with supporting documents to show that they are equal to or better than these specification standards.

1.02 **Chemical Safety**

All materials are completely asbestos free. The paint used shall be a powder coating completely free of all lead and chromate.

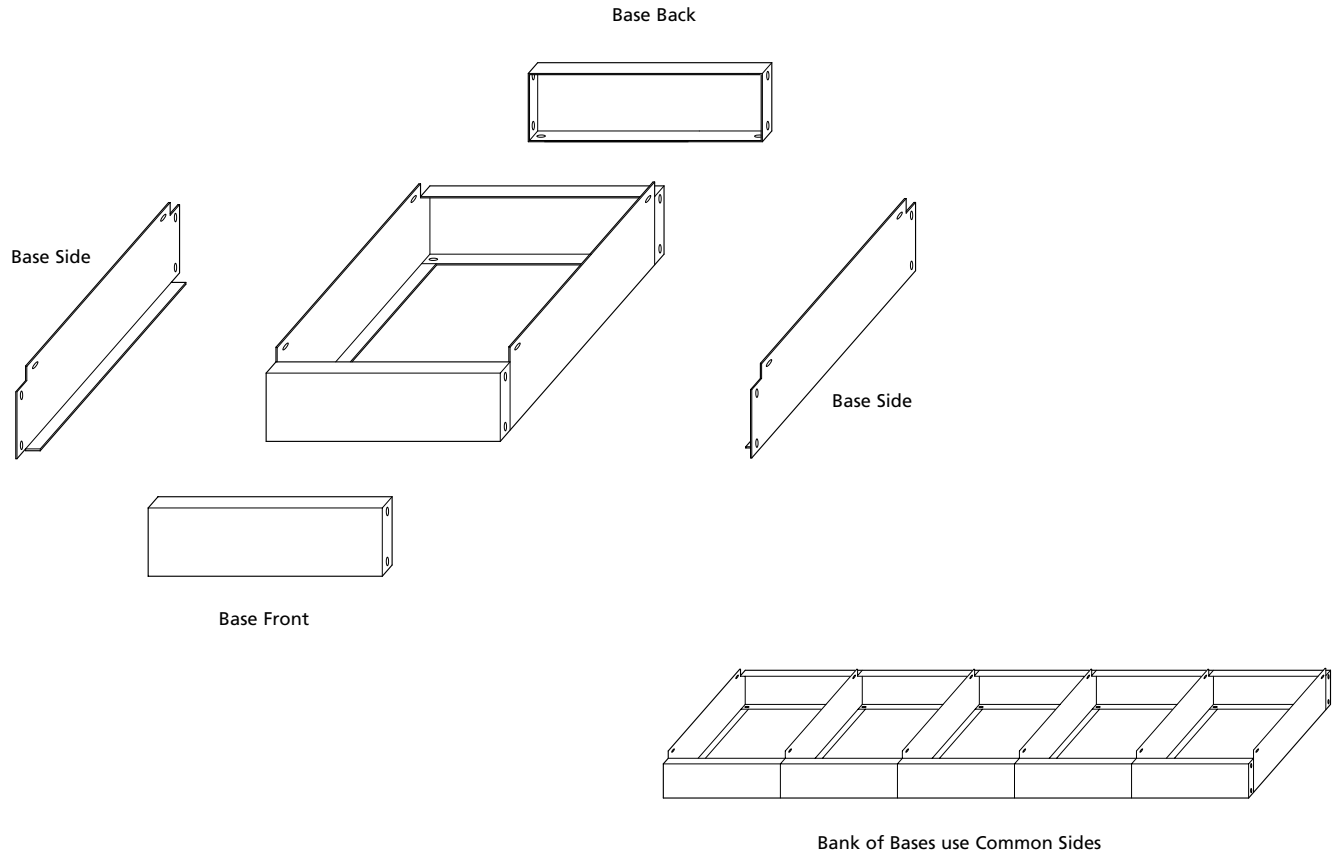
1.03 **Warranty**

Hadrian's galvalneal Box Base is warranted for a period of two years against defective parts and workmanship, excluding vandalism and improper installation.

Part 2 - Products

2.01 **Materials**

Box Bases shall be made of 22 gauge galvalneal steel free from surface imperfections and contaminants that would be detrimental to the acceptance of a high grade hybrid epoxy polyester powder finish.



Notes

- Bases are made from 22 gauge material.
- Base Front and Backs are identical.
- Base sides are used as common sides.
- Bases are 3-1/2" (89mm) high.

Hadrian Manufacturing, Inc. reserves the right to improve or modify its material and specifications at any time in such a manner as it may consider necessary or advisable and to discontinue the manufacture and sales of any products, without notice.

Hadrian Manufacturing Inc., 965 Syscon Road, Burlington, Ontario L7L 5S3 Tel: 905-333-0300 Fax: 905-333-1841
Hadrian Inc. 7420 Clover Avenue, Mentor, Ohio 44060 Tel: 440-942-9118 Fax: 440-942-9618