

## WALL MOUNTED and FLOOR MOUNTED Elite & Elite Plus Powder Coated Urinal Screens

### Material Specification

#### 1 . 0 1 Construction

---

Screens shall be constructed of two sheets of panel flatness zinc-coated galvalume steel ASTM A653 GR33, laminated under pressure to a honeycomb core for sound deadening and rigidity. Formed edges to be welded together and inter-locked under tension with a roll-formed oval crown locking bar, mitred, welded and ground smooth at the corners. Honeycomb to have a maximum 25mm (1") cell size.

#### 1 . 0 2 Wall Mounted Screens

---

Screens shall be 25mm (1") thick with cover sheets not less than 22-gauge (0.8mm / .030"). Screens must be 457mm (18") or 610mm (24") deep by 1219mm (48") high and anchored into the wall approximately 305mm (12") off the floor with two brackets spaced 902mm (35.5") apart.

#### 1 . 0 3 Floor Mounted Screens

---

Screens shall be 25mm (1") thick with cover sheets not less than 22-gauge (0.8mm / .030"). Screens must be 1626mm (64") high in depths ranging from 457mm (18") to 1473mm (58") and anchored into the wall approximately 152mm (6") off the floor with two brackets spaced 1308mm (51.5") apart.

Supporting pilasters shall be 127mm (5") wide by 32mm (1.25") thick with cover sheets not less than 18-gauge (1.2mm / .048"). Supporting pilasters shall be securely and rigidly fastened to the floor using 19mm (0.75") diameter expansion shields with spacers and nuts for leveling. Floors, preferably concrete, should not be less than 127mm (5") thick for rigidity and anchorage. The floor fastening shall be concealed and protected by a 102mm (4") high, die-formed stainless steel pilaster shoe.

#### 1 . 0 4 Hardware & Fittings

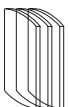
---

Wall mounted and floor mounted screens shall be fastened to the wall with chrome plated zinc die cast double-ear brackets. Floor mounted screens shall be fastened to the supporting pilaster with chrome plated zinc die cast "U" brackets. Fasteners are theft-proof 6-lobe security head stainless steel screws.

#### 1 . 0 5 Finish

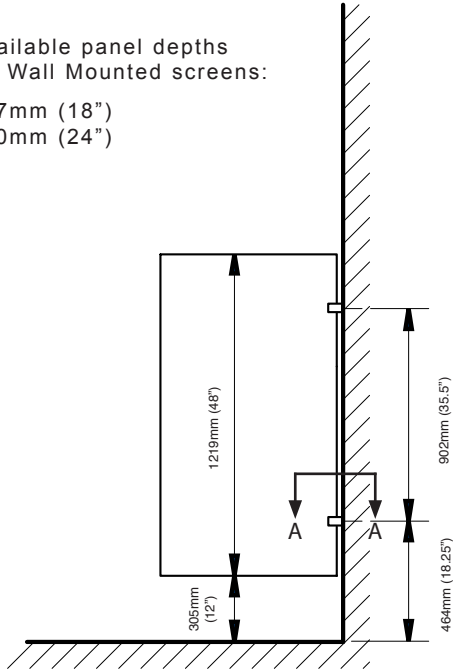
---

All sheet metal to be thoroughly cleaned, phosphated and finished with a high performance powder coating, providing a uniform, smooth protective finish. Color shall be as selected from Hadrian's color card.



## WALL MOUNTED and FLOOR MOUNTED Elite & Elite Plus Powder Coated Urinal Screens

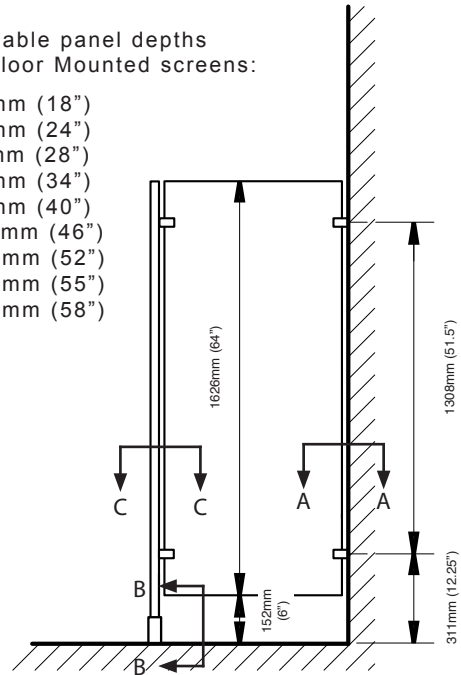
Available panel depths  
for Wall Mounted screens:  
457mm (18")  
610mm (24")



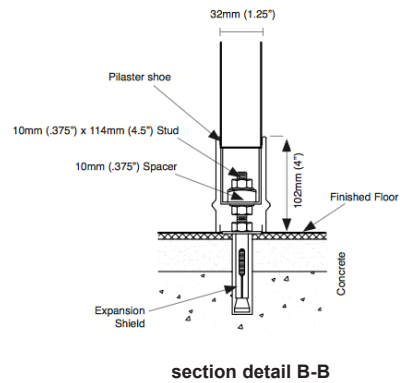
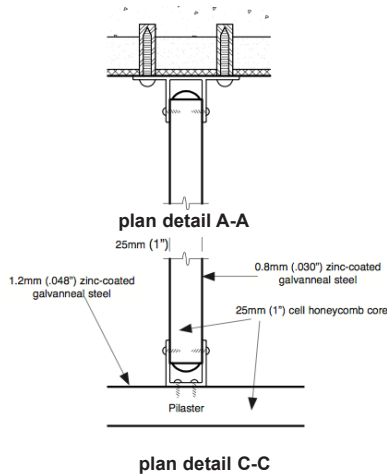
**Wall Mounted Screen**

Available panel depths  
for Floor Mounted screens:

457mm (18")  
610mm (24")  
711mm (28")  
864mm (34")  
102mm (40")  
1168mm (46")  
1321mm (52")  
1397mm (55")  
1473mm (58")

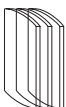


**Floor Mounted Screen**



### Important Note:

Refer to final drawings for wood blocking information. Wood blocking is critical to ensure a rigid installation.



**Hadrian Manufacturing Inc.,** 965 Syscon Road, Burlington, ON, Canada, L7L 5S3  
**Hadrian Inc.,** 7420 Clover Avenue, Mentor, OH, U.S.A., 44060  
[www.hadrian-inc.com](http://www.hadrian-inc.com)

965 Syscon Road, Burlington, ON, Canada, L7L 5S3

7420 Clover Avenue, Mentor, OH, U.S.A., 44060

Tel: (905) 333-0300

Tel: (440) 942-9118

Fax: (905) 333-1841

Fax: (440) 942-9618